

Woodward-Granger Network Equipment Refresh (E-Rate Form 470 #250013032) Question Response

1. Do you want an on-prem controller or do you prefer a cloud-based controller?

The preference is cloud for primary management of switches and AP's. If there are additional services that requirement on-prem please detail the need/reason.

2. The High School Health/Weights and Grandwood MDF have no mention of optics. Do you need any for those locations or are those switches running on their own connections?

The weight room, it does not have optics because it is currently a wireless point-to-point via ethernet. Grandwood doesn't have any optics because it is a stand-alone sight connected through a firewall site-to-site VPN. Currently no need for SFP modules, however I would prefer the switching be consistent with the other buildings and have the capability.

3a. I noticed that the RFP mentions "purchase and configuration" of network equipment. I wanted to clarify—are you and the district looking for remote configuration with the equipment shipped for your team to install, or are you requesting a complete on-site rack and stack with configuration?

My team(my network/device technician & myself) plan to be in / build as much of the configuration as possible because we will be operating it on a day-to-day basis.

With this in mind, if your company is willing to bid this way, I would like to see 2 options for installation.

#1 Configuration block of hours to assist the district

#2 Full rip/replace and configuration by the vendor (district coordinated)

3b. If the latter(#2) is required, could you please provide the quantities of data closets where the switches would be mounted, along with pictures of those existing closets?

The RFP has the MDF/IDF/Closet breakdown

Locations

2200 State Street, Granger, IA 50109 - Early Learning Center ELC

2002 Oak Street, Granger, IA 50109 - Elementary Elem

306 West Third Street, Woodward, IA 50276 - Middle School MS

306 West Third Street, Woodward, IA 50276 - High School HS

1501 Mulberry Street, Granger, IA 50109 - Grandwood Education Center

1904 State Street, Granger, IA 50109 - Administration Offices

4. Can you please explain how the Configuration Support will work for this project?

See question 3

5. How should the bidder break out the time costs?

Please break out the cost per building or per closet/MDF/IDF, whichever makes the most sense for your team.

If licensing is priced in bulk/district that can be listed as a district cost.

Please denote any ineligible E-rate costs in the breakout.

6. A description of the training Woodward Granger Schools expects for the management / configuration / controller and how bidders are to provide it?

Training of the management console of both the Wireless and Wired Equipment in a self-paced format is preferred. In-person training or remote live training per hour is optional. Please include Manufacturer recommended training. If training hours are included in the purchase, please note that in the bid response

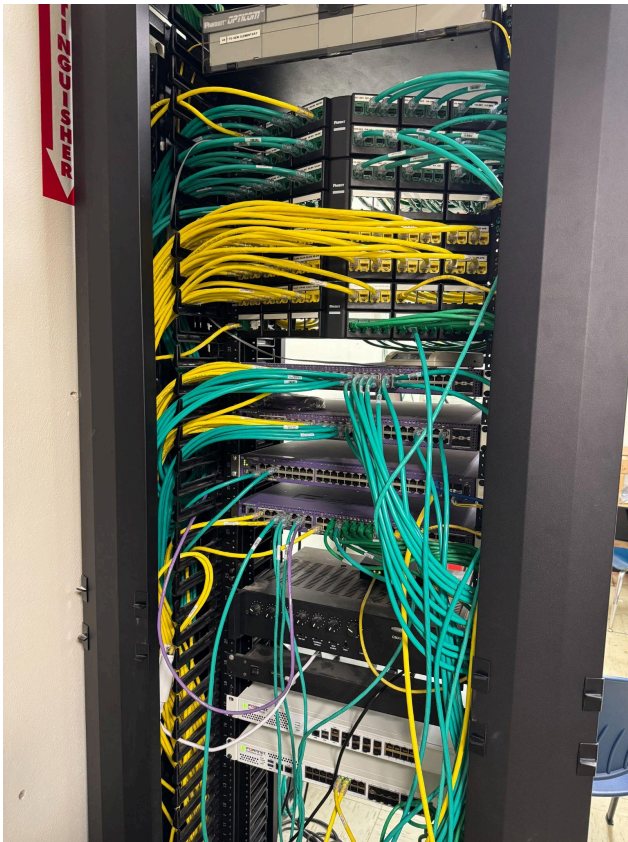
7. Can the AP's redundant connections be to the same switch?

Redundant connectivity to Wireless Access Points needs to be patched to 2 different switches with equivalent power and throughput to RFP specs and manufacturer recommendations

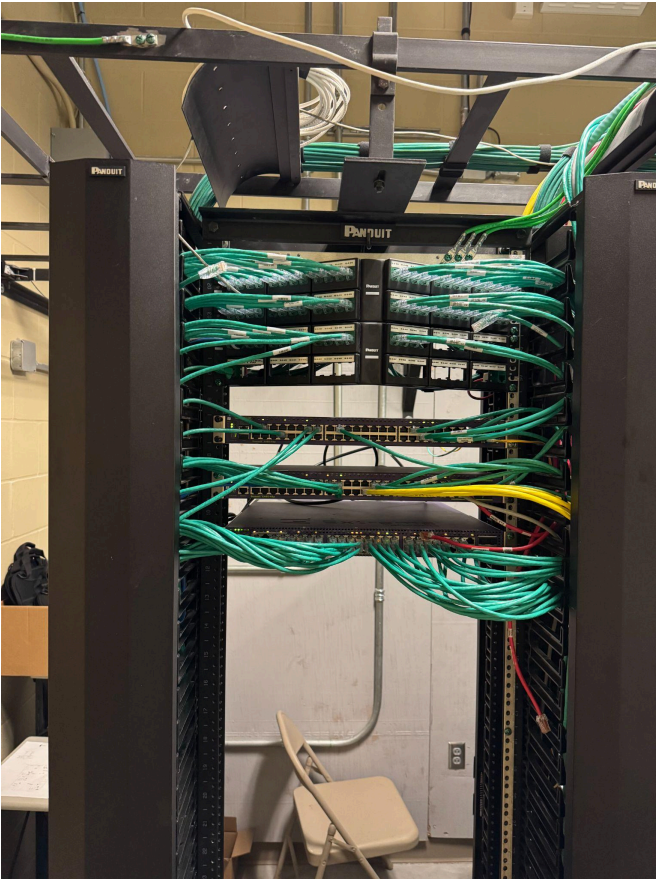
Building Closet MDF/IDF/Closets pictured below

***Disclaimer - Not all AP's are currently patched redundantly and there are open ports on switching due to the loss of POE on some switches**

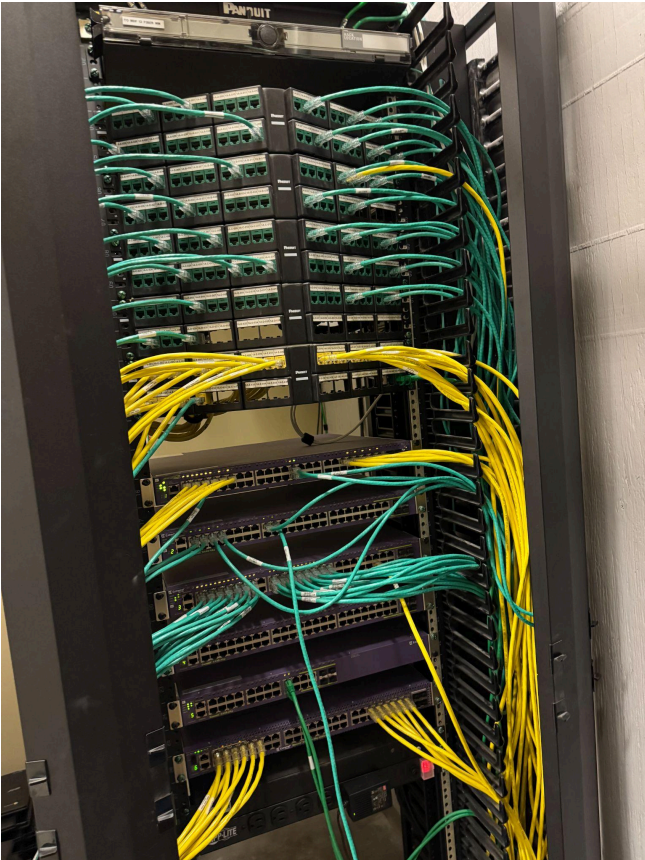
Early Learning Center MDF



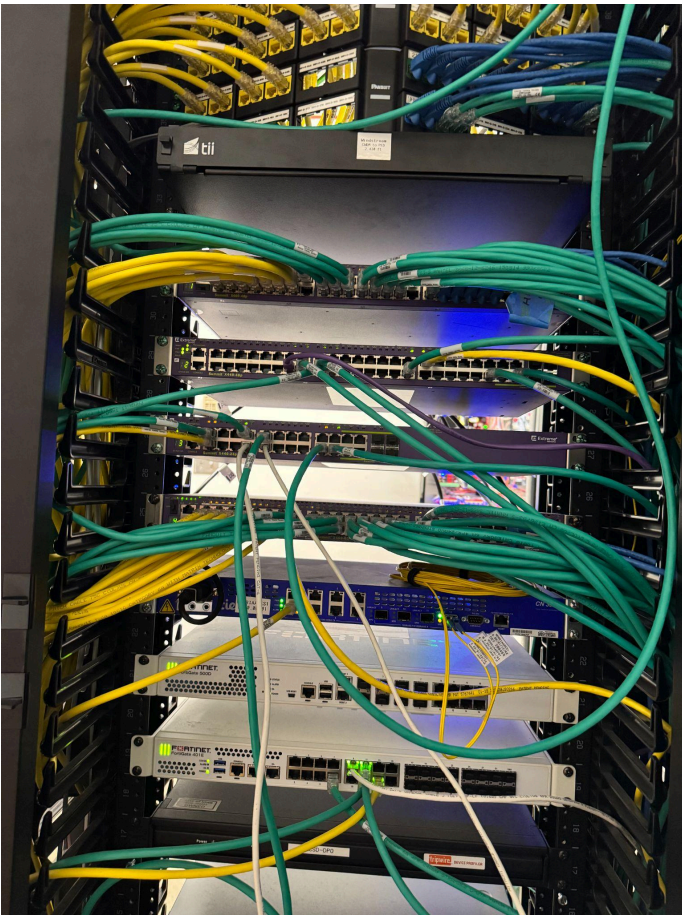
Elementary MDF



Elementary IDF



MS MDF



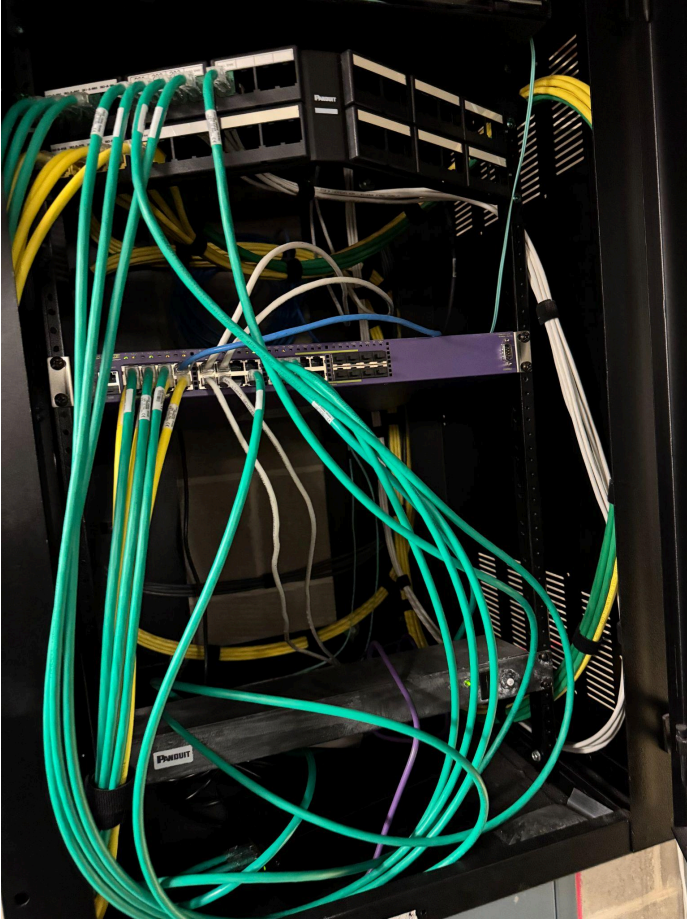
HS IDF



HS Health/Weights IDF



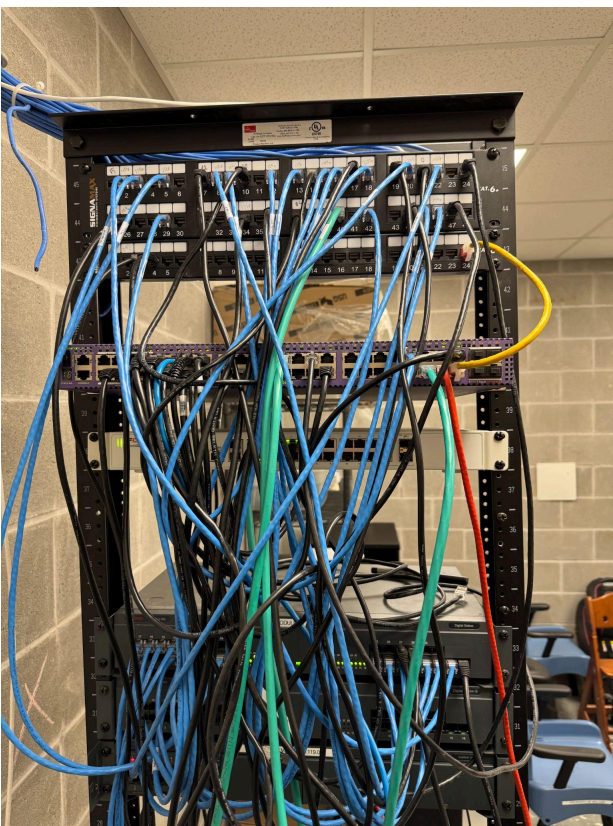
HS Gym IDF



HS Shop IDF



Grandwood MDF



Administration Building MDF

